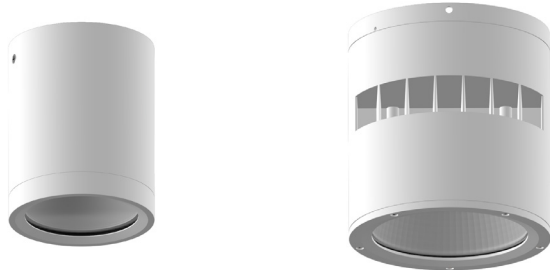


LEDTOUCH™ Cylinder Downlight V2 Datasheet



IP65

LEDTOUCH™ Cylinder Downlight series is the ideal energy-saving replacement for 35W, 70W and 150W metal halide downlights, which provides high quality lighting for high-ceiling spaces for indoor applications. LEDTOUCH™ Cylinder Downlight series have full available in size, power and beam angle on request for better energy efficiency and operation efficiency.

Benefits

Energy saving

- 50% energy saving compared to traditional downlight

Outstanding light performance

- Without flicker, Low glare, UGR<19
- Up to 110 lm/W
- 30,000hrs lifetime

Whole range for all applications

- Size: 3.5"/4"/5.5"/6"/8"/10"
- 12 kinds of powers: 8W/15W/20W/24W/28W/33W/35W/50W/75W/100W/120W/150W
- CCT: 3000K/4000K/5000K

Applications

- Metro stations
- Airports
- Office buildings
- Shopping Mall
- Public buildings

LEDTOUCH™ Cylinder Downlight V2

Technical Data

Optical Specifications

		8W	15W	15W	20W	24W	28W	33W	35W	50W	75W	100W	120W	150W
		3.5"	3.5"	4"	4"	4"	5.5"	5.5"	6"	6"	8"	8"	10"	10"
Luminous Flux (ON/OFF)	@4000K R80	720 lm	1350 lm	1350 lm	1800 lm	2160 lm	2520 lm	2970 lm	3500 lm	5000 lm	8250 lm	11000 lm	13200 lm	16500 lm
Efficacy (ON/OFF)	@4000K R80	90 lm/W							100 lm/w		110 lm/w			
CCT		3000K/4000K/5000K												
CRI		>90												
SDCM		<5												
Beam Angle		24°/38°/57°							57°					

Electrical and Mechanical Specifications

Input Voltage		220-240V AC 50/60Hz													
Power Consumption		8W	15W	15W	20W	24W	28W	33W	35W	50W	75W	100W	120W	150W	
Power Factor		>0.5				>0.9									
Surge Protection		(1/2KV) L/N /LN/PE acc IEC 61000-3-2													
Dimensions (mm)	Diameter	90	90	110	110	110	135	135	160	160	220	220	260	260	
	Height	110	110	140	140	140	170	170	200	200	235	235	275	275	
Weight (kg)		0.6	0.6	1.1	1.1	1.1	1.6	1.6	2.3	2.3	5.2	5.2	7.2	7.2	
Cover Lens		PMMA													
Housing		Aluminum													

System Specifications

Power		220-240V AC 50/60Hz												
Control		ON/OFF												
Mounting		Surface / Suspend mounting (Accessories purchased separately)												
Operating Temperature		-10°C to +40°C												
Storage Temperature		-10°C to +60°C												
Environment		Indoor (IP65)												
Lumen Maintenance		L70@25°C - 30,000hrs												
Safety Approval		Electrical Protection Class I, CB, CCC												

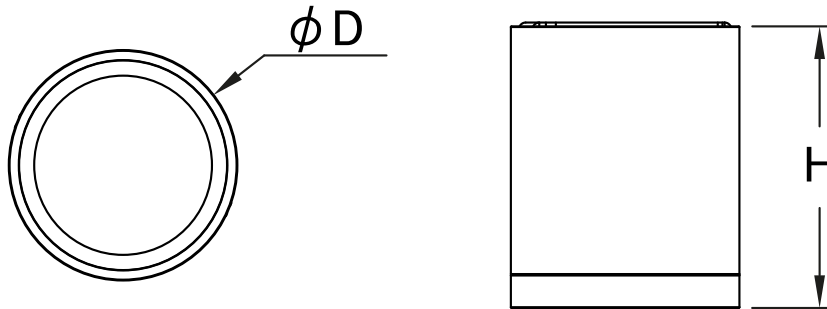
Due to the special conditions of manufacturing process of LED, the typical data of technical parameters can only reflect statistical figures and do not necessarily correspond to the actual parameters of each single product which could differ from typical data.

Exceeding maximum ratings for operation voltage will cause hazardous overload and will likely destroy the LED module.

Exceeding maximum ratings for operation and storage temperature will reduce expected life time or destroy the LED module.

LEDTOUCH™ Cylinder Downlight V2

Dimensions



Dimensions

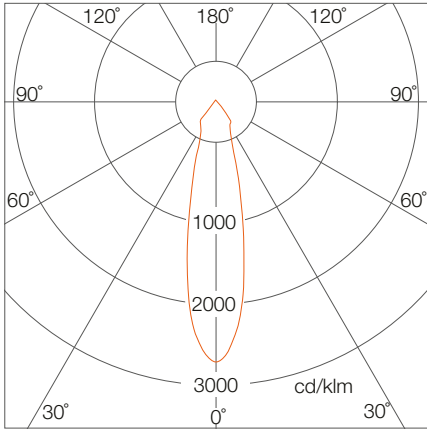
	3.5"	4"	5.5"	6"	8"	10"
D	90mm	110mm	135mm	160mm	220mm	260mm
H	110mm	140mm	170mm	200mm	235mm	275mm

LEDOUCH™ Cylinder Downlight V2

Photometrics

24°

Light Distribution Curve



Illuminance at a distance

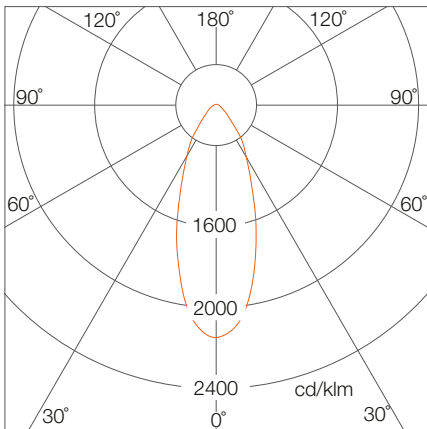
	Center Beam Lux/klm	Beam Width
0.5m	22057	0.21m
1m	5514	0.42m
1.5m	2451	0.63m
2m	1309	0.84m
2.5m	882	1.05m
3m	613	1.26m

For feet multiply by 3.28

● Horiz.Spread: 23.8°
For fc divide by 10.7

38°

Light Distribution Curve



Illuminance at a distance

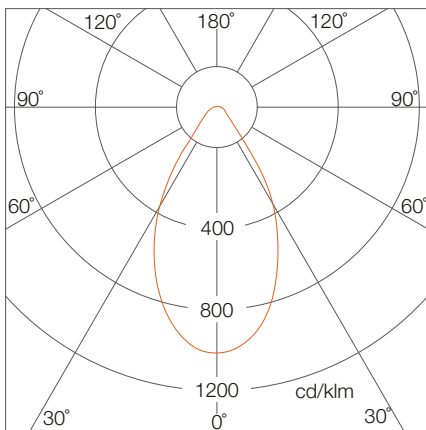
	Center Beam Lux/klm	Beam Width
0.5m	5897	0.35m
1m	1497	0.70m
1.5m	665	1.06m
2m	374	1.41m
2.5m	239	1.76m
3m	166	2.11m

For feet multiply by 3.28

● Horiz.Spread: 38.8°
For fc divide by 10.7

57°

Light Distribution Curve



Illuminance at a distance

	Center Beam Lux/klm	Beam Width
0.5m	4123	0.54m
1m	1031	1.08m
1.5m	458	1.62m
2m	258	2.16m
2.5m	165	2.70m
3m	115	3.24m

For feet multiply by 3.28

● Horiz.Spread: 56.8°
For fc divide by 10.7

Due to the manufacturing processes of LED, the polar candela distribution and distance luminaries only reflect statistical figures and do not necessarily correspond to the actual parameters of individual product that may differ from the typical values.

LEDTOUCH™ Cylinder Downlight V2

Ordering Codes

Fixture

Short Text	Power	CCT	Beam Angle	IC	EAN10	EAN40
LDTH CYLINDER V2 350 8W 930 24D 18X1 OSRAM	8W	3000K	24°	AM438540055	4062172272254	4062172272261
LDTH CYLINDER V2 350 8W 930 38D 18X1 OSRAM	8W	3000K	38°	AM438550055	4062172272278	4062172272285
LDTH CYLINDER V2 350 8W 930 57D 18X1 OSRAM	8W	3000K	57°	AM438560055	4062172272292	4062172272308
LDTH CYLINDER V2 350 8W 940 24D 18X1 OSRAM	8W	4000K	24°	AM438570055	4062172272315	4062172272322
LDTH CYLINDER V2 350 8W 940 38D 18X1 OSRAM	8W	4000K	38°	AM438580055	4062172272339	4062172272346
LDTH CYLINDER V2 350 8W 940 57D 18X1 OSRAM	8W	4000K	57°	AM438590055	4062172272353	4062172272360
LDTH CYLINDER V2 350 8W 950 24D 18X1 OSRAM	8W	5000K	24°	AM438600055	4062172272377	4062172272384
LDTH CYLINDER V2 350 8W 950 38D 18X1 OSRAM	8W	5000K	38°	AM440190055	4062172272438	4062172272445
LDTH CYLINDER V2 350 8W 950 57D 18X1 OSRAM	8W	5000K	57°	AM440200055	4062172272452	4062172272469
LDTH CYLINDER V2 350 15W 930 24D 18X1 OSRAM	15W	3000K	24°	AM440210055	4062172272476	4062172272483
LDTH CYLINDER V2 350 15W 930 38D 18X1 OSRAM	15W	3000K	38°	AM440220055	4062172272490	4062172272506
LDTH CYLINDER V2 350 15W 930 57D 18X1 OSRAM	15W	3000K	57°	AM440230055	4062172272513	4062172272520
LDTH CYLINDER V2 350 15W 940 24D 18X1 OSRAM	15W	4000K	24°	AM440240055	4062172272537	4062172272544
LDTH CYLINDER V2 350 15W 940 38D 18X1 OSRAM	15W	4000K	38°	AM440250055	4062172272551	4062172272568
LDTH CYLINDER V2 350 15W 940 57D 18X1 OSRAM	15W	4000K	57°	AM440260055	4062172272575	4062172272582
LDTH CYLINDER V2 350 15W 950 24D 18X1 OSRAM	15W	5000K	24°	AM440270055	4062172272599	4062172272605
LDTH CYLINDER V2 350 15W 950 38D 18X1 OSRAM	15W	5000K	38°	AM440280055	4062172272612	4062172272629
LDTH CYLINDER V2 350 15W 950 57D 18X1 OSRAM	15W	5000K	57°	AM440290055	4062172272636	4062172272643
LDTH CYLINDER V2 400 15W 930 24D 12X1 OSRAM	15W	3000K	24°	AM440300055	4062172272650	4062172272667
LDTH CYLINDER V2 400 15W 930 38D 12X1 OSRAM	15W	3000K	38°	AM440310055	4062172272674	4062172272681
LDTH CYLINDER V2 400 15W 930 57D 12X1 OSRAM	15W	3000K	57°	AM440320055	4062172272698	4062172272704
LDTH CYLINDER V2 400 15W 940 24D 12X1 OSRAM	15W	4000K	24°	AM440330055	4062172272711	4062172272728
LDTH CYLINDER V2 400 15W 940 38D 12X1 OSRAM	15W	4000K	38°	AM440340055	4062172272735	4062172272742
LDTH CYLINDER V2 400 15W 940 57D 12X1 OSRAM	15W	4000K	57°	AM440350055	4062172272759	4062172272766
LDTH CYLINDER V2 400 15W 950 24D 12X1 OSRAM	15W	5000K	24°	AM440360055	4062172272773	4062172272780
LDTH CYLINDER V2 400 15W 950 38D 12X1 OSRAM	15W	5000K	38°	AM440370055	4062172272797	4062172272803
LDTH CYLINDER V2 400 15W 950 57D 12X1 OSRAM	15W	5000K	57°	AM440380055	4062172272810	4062172272827
LDTH CYLINDER V2 400 20W 930 24D 12X1 OSRAM	20W	3000K	24°	AM440390055	4062172272834	4062172272841
LDTH CYLINDER V2 400 20W 930 38D 12X1 OSRAM	20W	3000K	38°	AM440400055	4062172272858	4062172272865
LDTH CYLINDER V2 400 20W 930 57D 12X1 OSRAM	20W	3000K	57°	AM440410055	4062172272872	4062172272889
LDTH CYLINDER V2 400 20W 940 24D 12X1 OSRAM	20W	4000K	24°	AM440420055	4062172272896	4062172272902
LDTH CYLINDER V2 400 20W 940 38D 12X1 OSRAM	20W	4000K	38°	AM440430055	4062172272919	4062172272926
LDTH CYLINDER V2 400 20W 940 57D 12X1 OSRAM	20W	4000K	57°	AM440440055	4062172272933	4062172272940
LDTH CYLINDER V2 400 20W 950 24D 12X1 OSRAM	20W	5000K	24°	AM440450055	4062172272957	4062172272964
LDTH CYLINDER V2 400 20W 950 38D 12X1 OSRAM	20W	5000K	38°	AM440460055	4062172272971	4062172272988
LDTH CYLINDER V2 400 20W 950 57D 12X1 OSRAM	20W	5000K	57°	AM440470055	4062172272995	4062172273008
LDTH CYLINDER V2 400 24W 930 24D 12X1 OSRAM	24W	3000K	24°	AM440480055	4062172273015	4062172273022
LDTH CYLINDER V2 400 24W 930 38D 12X1 OSRAM	24W	3000K	38°	AM440490055	4062172273039	4062172273046
LDTH CYLINDER V2 400 24W 930 57D 12X1 OSRAM	24W	3000K	57°	AM440500055	4062172273053	4062172273060
LDTH CYLINDER V2 400 24W 940 24D 12X1 OSRAM	24W	4000K	24°	AM440510055	4062172273077	4062172273084
LDTH CYLINDER V2 400 24W 940 38D 12X1 OSRAM	24W	4000K	38°	AM440520055	4062172273091	4062172273107
LDTH CYLINDER V2 400 24W 940 57D 12X1 OSRAM	24W	4000K	57°	AM440530055	4062172273114	4062172273121
LDTH CYLINDER V2 400 24W 950 24D 12X1 OSRAM	24W	5000K	24°	AM440540055	4062172273138	4062172273145
LDTH CYLINDER V2 400 24W 950 38D 12X1 OSRAM	24W	5000K	38°	AM440550055	4062172273152	4062172273169
LDTH CYLINDER V2 400 24W 950 57D 12X1 OSRAM	24W	5000K	57°	AM440560055	4062172273176	4062172273183
LDTH CYLINDER V2 550 28W 930 24D 4X1 OSRAM	28W	3000K	24°	AM440570055	4062172273190	4062172273206
LDTH CYLINDER V2 550 28W 930 38D 4X1 OSRAM	28W	3000K	38°	AM440170055	4062172272391	4062172272407
LDTH CYLINDER V2 550 28W 930 57D 4X1 OSRAM	28W	3000K	57°	AM440180055	4062172272414	4062172272421

LEDTOUCH™ Cylinder Downlight V2

Ordering Codes

Fixture

Short Text	Power	CCT	Beam Angle	IC	EAN10	EAN40
LDTH CYLINDER V2 550 28W 940 24D 4X1 OSRAM	28W	4000K	24°	AM440580055	4062172273213	4062172273220
LDTH CYLINDER V2 550 28W 940 38D 4X1 OSRAM	28W	4000K	38°	AM440590055	4062172273237	4062172273244
LDTH CYLINDER V2 550 28W 940 57D 4X1 OSRAM	28W	4000K	57°	AM440600055	4062172273251	4062172273268
LDTH CYLINDER V2 550 28W 950 24D 4X1 OSRAM	28W	5000K	24°	AM440610055	4062172273275	4062172273282
LDTH CYLINDER V2 550 28W 950 38D 4X1 OSRAM	28W	5000K	38°	AM440620055	4062172273299	4062172273305
LDTH CYLINDER V2 550 28W 950 57D 4X1 OSRAM	28W	5000K	57°	AM440630055	4062172273312	4062172273329
LDTH CYLINDER V2 550 33W 930 24D 4X1 OSRAM	33W	3000K	24°	AM440640055	4062172273336	4062172273343
LDTH CYLINDER V2 550 33W 930 38D 4X1 OSRAM	33W	3000K	38°	AM440650055	4062172273350	4062172273367
LDTH CYLINDER V2 550 33W 930 57D 4X1 OSRAM	33W	3000K	57°	AM440660055	4062172273374	4062172273381
LDTH CYLINDER V2 550 33W 940 24D 4X1 OSRAM	33W	4000K	24°	AM440670055	4062172273398	4062172273404
LDTH CYLINDER V2 550 33W 940 38D 4X1 OSRAM	33W	4000K	38°	AM440680055	4062172273411	4062172273428
LDTH CYLINDER V2 550 33W 940 57D 4X1 OSRAM	33W	4000K	57°	AM440690055	4062172273435	4062172273442
LDTH CYLINDER V2 550 33W 950 24D 4X1 OSRAM	33W	5000K	24°	AM440700055	4062172273459	4062172273466
LDTH CYLINDER V2 550 33W 950 38D 4X1 OSRAM	33W	5000K	38°	AM440710055	4062172273473	4062172273480
LDTH CYLINDER V2 550 33W 950 57D 4X1 OSRAM	33W	5000K	57°	AM440720055	4062172273497	4062172273503
LDTH CYLINDER V2 600 35W 930 57D 4X1 OSRAM	35W	3000K	57°	AM440730055	4062172273510	4062172273527
LDTH CYLINDER V2 600 35W 940 57D 4X1 OSRAM	35W	4000K	57°	AM440740055	4062172273534	4062172273541
LDTH CYLINDER V2 600 35W 950 57D 4X1 OSRAM	35W	5000K	57°	AM440750055	4062172273558	4062172273565
LDTH CYLINDER V2 600 50W 930 57D 4X1 OSRAM	50W	3000K	57°	AM440760055	4062172273572	4062172273589
LDTH CYLINDER V2 600 50W 940 57D 4X1 OSRAM	50W	4000K	57°	AM440770055	4062172273596	4062172273602
LDTH CYLINDER V2 600 50W 950 57D 4X1 OSRAM	50W	5000K	57°	AM440780055	4062172273619	4062172273626
LDTH CYLINDER V2 800 75W 930 57D VS1 OSRAM	75W	3000K	57°	AM440790055	/	4062172273633
LDTH CYLINDER V2 800 75W 940 57D VS1 OSRAM	75W	4000K	57°	AM440800055	/	4062172273640
LDTH CYLINDER V2 800 75W 950 57D VS1 OSRAM	75W	5000K	57°	AM440810055	/	4062172273657
LDTH CYLINDER V2 800 100W 930 57D VS1 OSRAM	100W	3000K	57°	AM440820055	/	4062172273664
LDTH CYLINDER V2 800 100W 940 57D VS1 OSRAM	100W	4000K	57°	AM440830055	/	4062172273671
LDTH CYLINDER V2 800 100W 950 57D VS1 OSRAM	100W	5000K	57°	AM440840055	/	4062172273688
LDTH CYLINDER V2 1000 120W 930 57D VS1 OSRAM	120W	3000K	57°	AM440850055	/	4062172273695
LDTH CYLINDER V2 1000 120W 940 57D VS1 OSRAM	120W	4000K	57°	AM440860055	/	4062172273701
LDTH CYLINDER V2 1000 120W 950 57D VS1 OSRAM	120W	5000K	57°	AM440870055	/	4062172273718
LDTH CYLINDER V2 1000 150W 930 57D VS1 OSRAM	150W	3000K	57°	AM440880055	/	4062172273725
LDTH CYLINDER V2 1000 150W 940 57D VS1 OSRAM	150W	4000K	57°	AM440890055	/	4062172273732
LDTH CYLINDER V2 1000 150W 950 57D VS1 OSRAM	150W	5000K	57°	AM440900055	/	4062172273749