

All changes from LAS 5. 3 SR1 to LAS 5.3 SR2

TABLE OF CONTENTS

1.	PROGRAMMER.....	2
1.1	SUNRISE TIMER.....	2
1.1.1	Sunrise Locations	2

1. PROGRAMMER

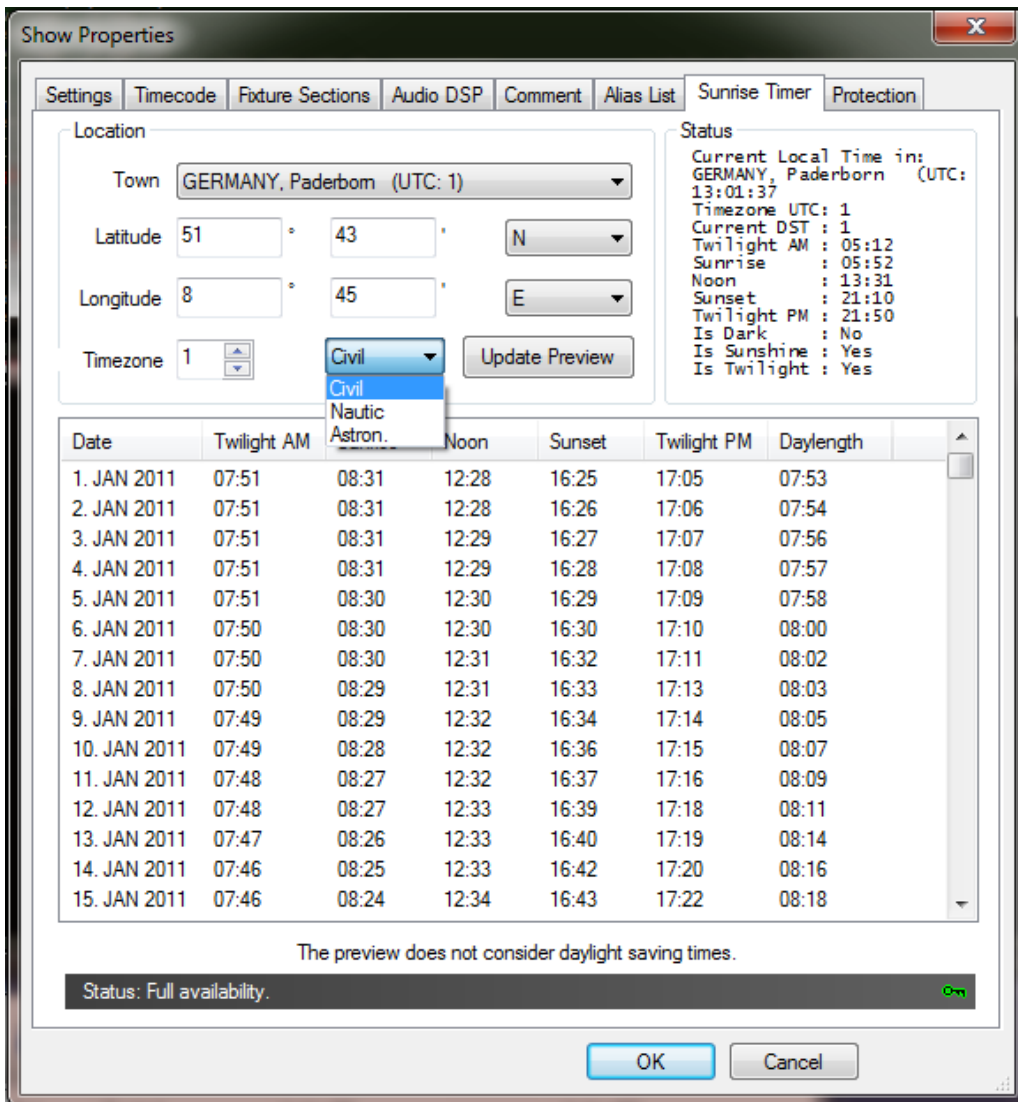
1.1 Sunrise Timer

The Sunrise Timer has now an additional checkbox to select the twilight mode used by the sunrise trigger. The user can now choose between civil, nautical and astronomical twilight.

The selected mode and time zone will be used in the online mode and for the Butler XT show export.

The Gui will also show “never” instead of a negative number, when no sunrise, sunset or twilight event occurs that day.

The Sunrise Timer is found in the show options.



1.1.1 Sunrise Locations

Corrected version of Locations.txt for the geographical positions.

